

# Horizon Europe Gender Equality Plan Information Day

**October 25, 2021**

# ICW-STEM

## The Israeli Council for the Advancement of Women in STEM



The National Council For The  
Advancement Of Woman  
In Science & Technology

החלטה מספר מט/11 של ועדת שרים לענייני מדע וטכנולוגיה מיום 20.11.2000 אשר צורפה לפרוטוקול החלטות הממשלה וקבלה תוקף של החלטת ממשלה ביום 07.12.2000 ומספרה הוא (מט/11)2660.

הקמת מועצה לקידום נשים במדע ובטכנולוגיה (מט/11)2660.

מ ה ל י ט י ם :

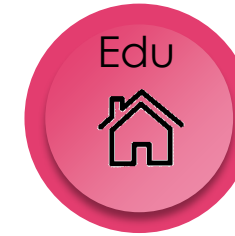
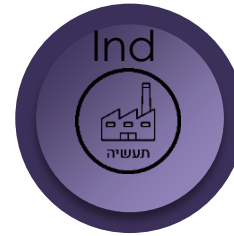
בהמשך להחלטת הפרלמנט האירופי מיום 3.2.2000 ועל-פי המלצות קבוצת הלסינקי שפועלת לענין נשים ומדע ליד מינהלת המחקר של הקהילה האירופית, לפיה תקים כל מדינה משתתפת מועצה לאומית בנושא, מחליטים להקים מועצה לאומית ישראלית לקידום נשים במדע ובטכנולוגיה, ליד משרד המדע, התרבות והספורט, אשר תפעל על-פי העקרונות להלן:

# ICW-STEM

## The Israeli Council for the Advancement of Women in STEM



The National Council For The  
Advancement Of Woman  
In Science & Technology



3



Encouraging education of girls in the STEM fields



Elevating the numbers of women students in STEM faculties and increasing the number of women with full professorship status and managerial positions



Increasing the number of women sitting in executive positions in the Hi-tech, biotech & Health industries

# The Council's Interest

**Advancing Research & Innovation in  
Israel – the Startup Nation**



**Advancing gender equality in  
research & Innovation**



# Why should you invest in GEP ?



# Israel in Horizon 2020



Net EU Contribution   
1,27B

Funding received by the  
project's participants after

Signed Grants   
1 651

Number of grant  
agreements signed,

Participation   
2 019

Number of organisations  
involved in H2020 projects.

Success rate   
12,21%

Ratio of the retained  
proposals to the total

Eligible Proposals   
13 015

Proposals that have not  
failed at the eligibility or

Applications   
15.213

Number of organisations  
applying for Horizon 2020

## Participations by country



The designations employed and the presentation of material on the map do not imply the expression of any opinion whatsoever on the part of the European Union concerning the legal status of any country, territory or areas or of its authorities, or concerning the delimitation of its frontiers or boundaries.

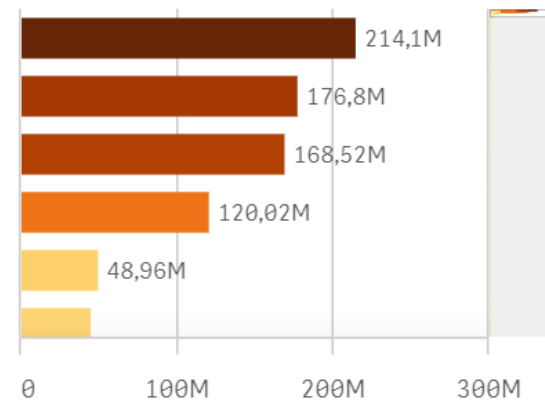
<https://webgate.ec.europa.eu/dashboard/sense>

## Participation by region (NUT...)

Region (NUTS 3)	
Totals	
Not available	

The filters are available only for country  
and NUTS levels.


## Top organisations



ERC Principal Investi...  
451

Net EU contribution t...  
661,0M

EIC Participation   
395

Seal of Excellence   
1 180

MSCA Participation   
295

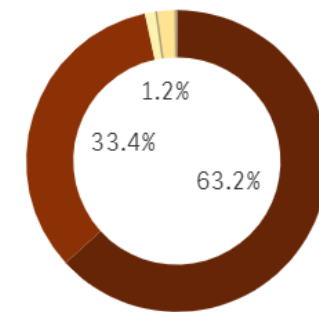
MSCA unique partici...  
84

Experts   
487

Proposals evaluated ...  
11 71

## Types of organisations

Based on the net EU Contribution



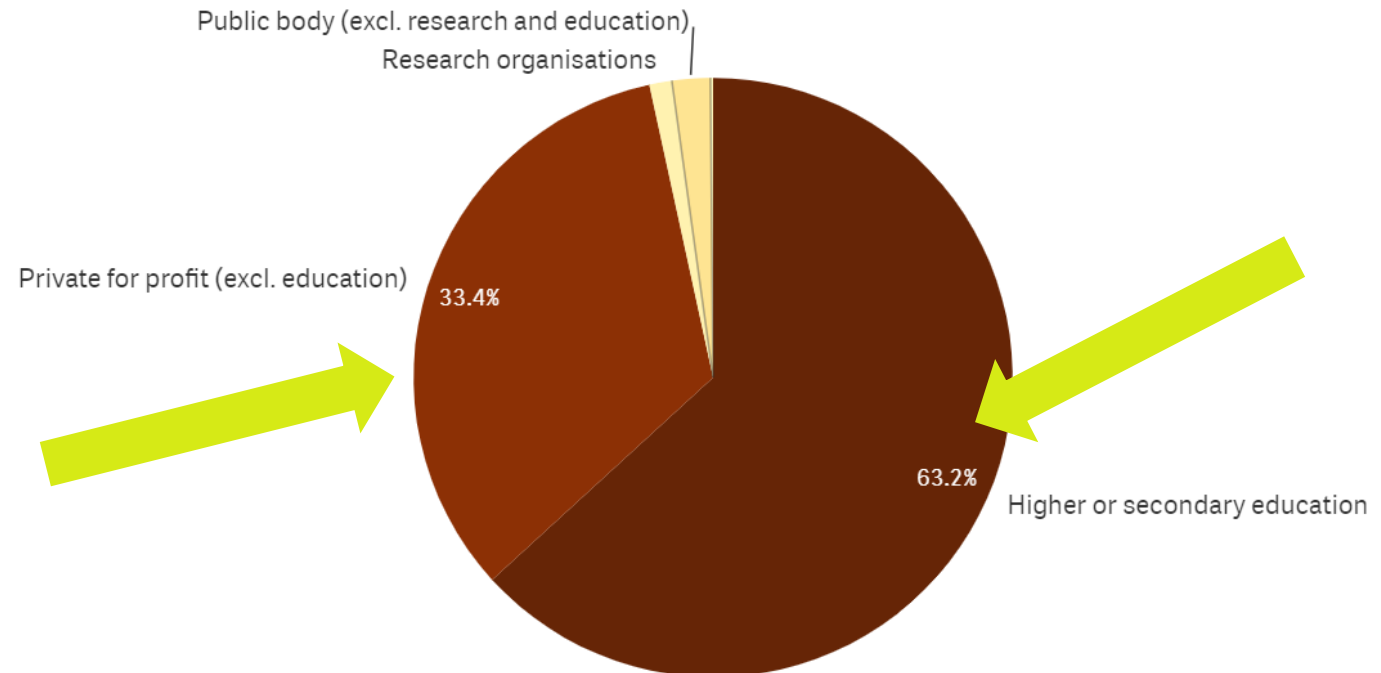
# Israel in Horizon 2020



The National Council For The  
Advancement Of Woman  
In Science & Technology

## Types of organisations

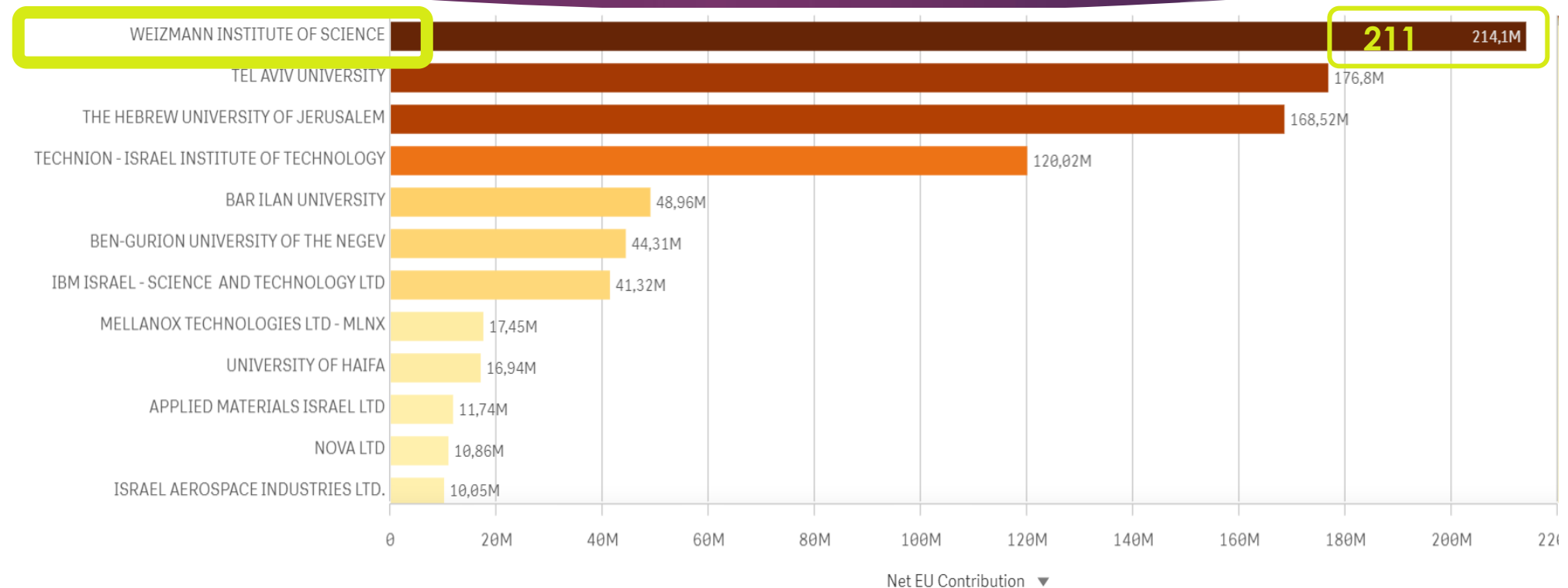
Based on the net EU Contribution



# Israel in Horizon 2020



The National Council For The  
Advancement Of Woman  
In Science & Technology

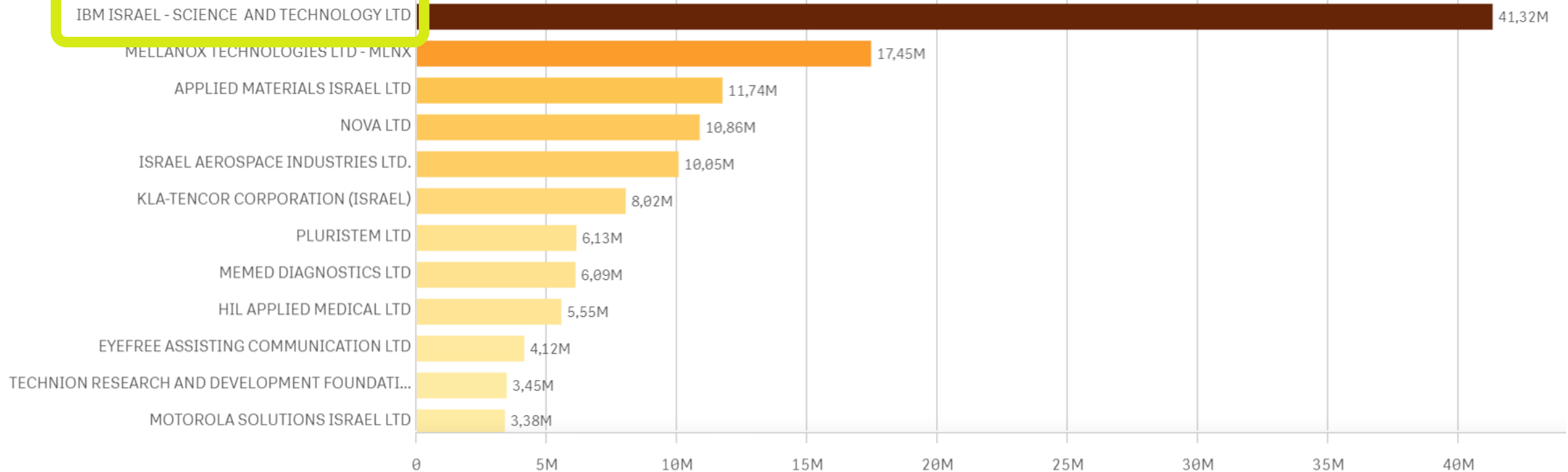




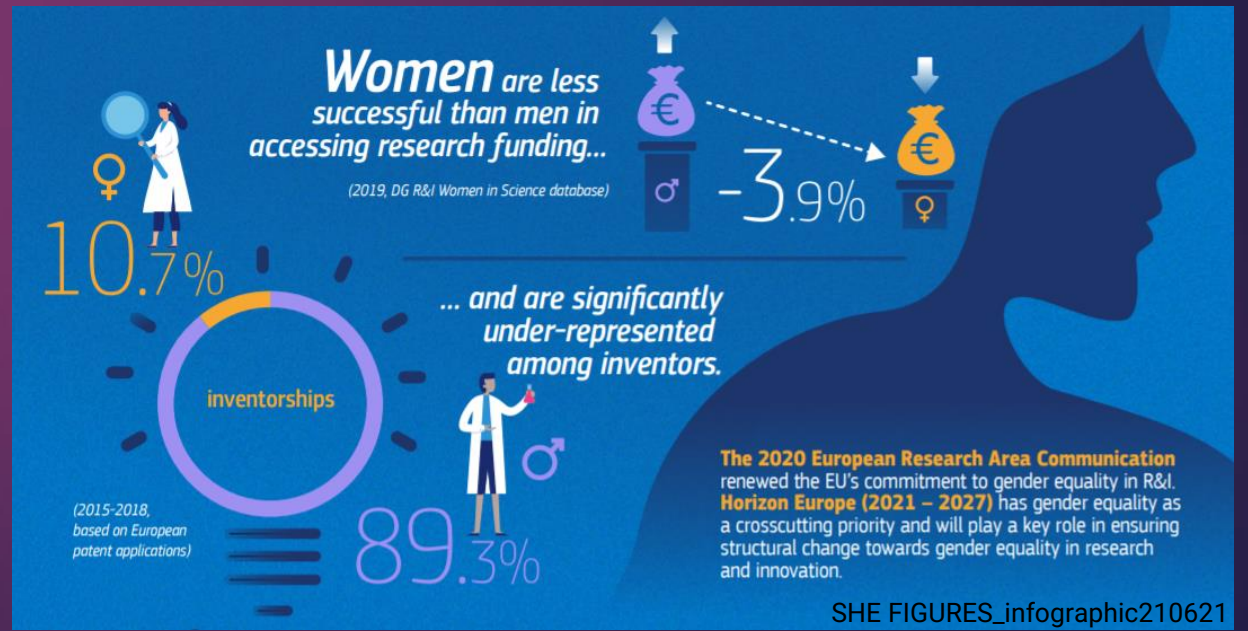
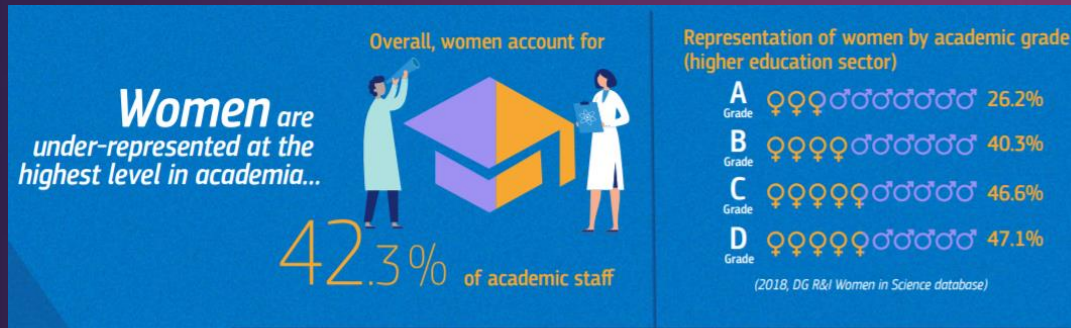
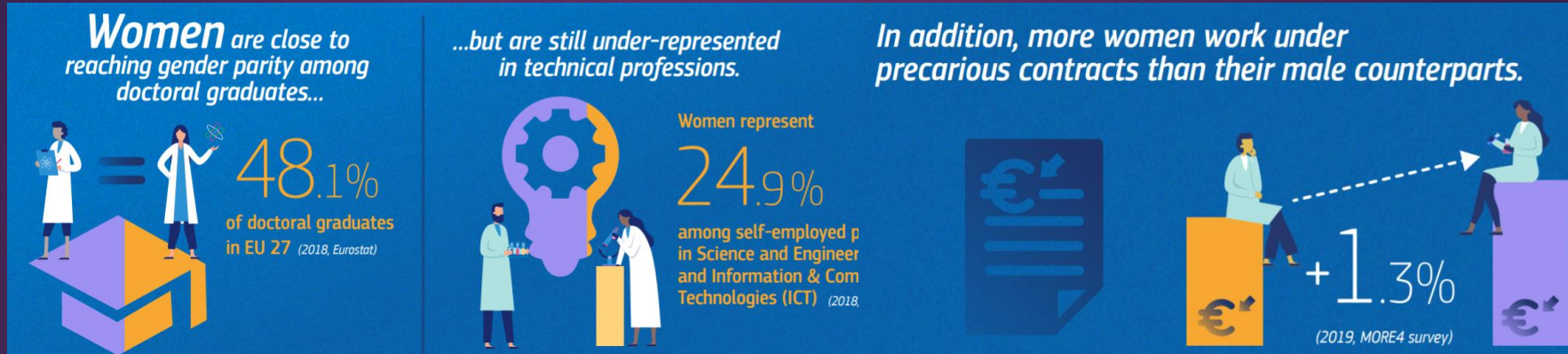
# Israel in Horizon 2020



## Top organisations



# Horizon Europe: The GEP demand





# GENDER EQUALITY PLANS

## an eligibility criterion for Horizon Europe

11



EUROPEAN UNION

#HorizonEU

June 2021



*"I am determined to step up our efforts on gender equality and support more talented women in research and innovation. I am committed to ensuring that the gender dimension is fully integrated into research and innovation supported by Horizon Europe, and that it is fully acknowledged in the European Research Area."*

Mariya Gabriel Commissioner for Innovation, Research, Culture, Education and Youth



### GENDER EQUALITY

A STRENGTHENED COMMITMENT IN HORIZON EUROPE

### What is a GEP?

A GEP is a set of actions that aim to promote gender equality through institutional and cultural change in research and innovation (R&I) organisations.

### What does the GEP eligibility criterion in Horizon Europe entail?

In co-design with a wide array of national and institutional research stakeholders and gender equality experts, and building on the experience gathered through FP7 and Horizon 2020 related projects, the European Commission has identified a **set of essential elements – or 'building blocks'** – for effective GEPs.

To meet the eligibility criterion, a GEP **must** fulfil **4 mandatory process-related requirements**:

#### PUBLICATION

a formal document published on the institution's website and signed by the top management.

1

#### DEDICATED RESOURCES

a commitment of resources and expertise in gender equality to implement the plan.

2

#### DATA COLLECTION & MONITORING

sex/gender-disaggregated data on personnel (and students, for the establishments concerned) and annual reporting based on indicators.

3

#### TRAINING

awareness-raising/training on gender equality and unconscious gender biases for staff and decision-makers.

4

A strengthened commitment in Horizon Europe; Publication Office of the EU

# ICW-STEM Contribution

1. Raise public awareness
2. Act as a channel for the transfer of information between Israel and Europe
3. Source for knowledge



# ICW-STEM Contribution



## Raise public awareness

13

### Target:

- Government Bodies
- Research performing organizations
- Researchers

### Tools:

- Posting position papers
- Webinars
- Social media

# ICW-STEM Contribution



## Information transfer

14

\* We participate in ERACs committees

ERAC is the EU's strategic policy advisory committee on topics related to research and innovation (R&I) within the European Research Area (ERA)

For Example: **SWG GRI**

\* Participation in consortiums

>> **GenderAction**

# ICW-STEM Contribution



## “Information Center”

15

- Guide organizations to info on the topic
- Help them connect with other organizations that have already made and implemented GEPs



Thank you  
for listening  
&  
Good luck



<https://www.facebook.com/Council4WomenInSTEM>



<https://www.linkedin.com/company/isareli-council-of-women-in-stem/?viewAsMember=true>



The National Council For The  
Advancement Of Woman  
In Science & Technology